

**Japanese Design Grouting/Flushing Pump**

**FMC Pumps – Mining & Construction**

**FMC Pumps – Various Fitted Type and Design**

**PM Batching Plant – Double Stage – Mixer & Agitator**

**PM Batching Plant – Mixer, Agitation & Pump**

**PM Single Piston & Hand Pump**

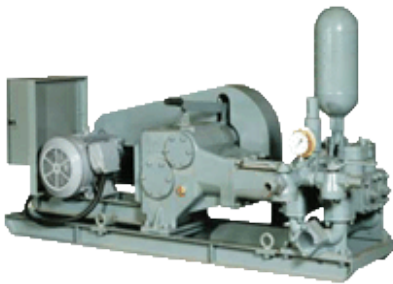


**优钻地质材料供应有限公司**  
**PRE-MAT DRILLING SUPPLIES PTE LTD**

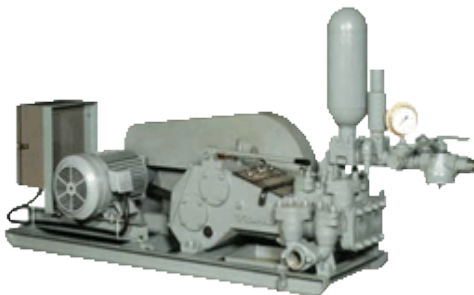
Co Reg. No. 199900213-K GST Reg. No. 19-9900213-K  
No. 48 Toh Guan Road East #06-107 Enterprise Hub, Singapore 608586  
Tel: (65) 6861 5323 Fax: (65) 6861 0882 Mobile: (65) 9633 1617 / (65) 9665 2712  
Email: enquiry@premat.com.sg Website: <http://www.premat.com.sg>

## JAPANESE DESIGN GROUTING/FLUSHING PUMP

TOHO GROUT PUMP (JAPAN)		BG-20B		BG-15B		BG-10C		BG-5C	
TYPE		Duplex Piston Pump, Double Acting		Duplex Piston Pump, Double Acting		Duplex Piston Pump, Double Acting		Single Piston Pump, Double Acting	
PISTON DIAMETER	mm	105	90	90 *	80	80 *	70	80 *	70
DISCHARGE CAPACITY	litre/min	300	217	200	157	120	91	70	53
WORKING PRESSURE	kg/cm <sup>2</sup>	23	32	22	32	29	38	24	32
STROKE LENGTH	mm	105		85		60		60	
DIMENSIONS(LxWxH)	mm	2250 x 805 x 1155		2130 x 525 x 1155		1900 x 565 x 1050		1610 x 600 x 715	
WEIGHT (EXCLUDING POWER UNIT)	kg	860		685		370		205	
POWER UNIT	kW-P	15.0 kW-4P		11.0 kW-4P		7.5 kW-4P		3.7 kW-4P	
	PS	20		15		10		5	



BG-15B c/w Electric



BG-10C c/w Electric



PMG-10 Fitted with Diesel

### PMG GROUT PUMP (MADE IN MALAYSIA)

PISTON SIZE	mm	45	52	68	85	89	100
<b>PMG-5A With Engine</b>							
DISCHARGE	litre/min	35	45	80*			
PRESSURE	kg/cm <sup>2</sup>	60	40	20*			
<b>PMG-5A With Motor</b>							
DISCHARGE	litre/min	28	40	70*			
PRESSURE	kg/cm <sup>2</sup>	60	40	20*			
<b>PMG-10 With Engine</b>							
DISCHARGE	litre/min	54	70	120*			
PRESSURE	kg/cm <sup>2</sup>	70	50	30*			
<b>PMG-10 With Motor</b>							
DISCHARGE	litre/min	45	60	100*			
PRESSURE	kg/cm <sup>2</sup>	30	50	70*			
<b>PMG-20A With Engine</b>							
DISCHARGE	litre/min				210	240	330*
PRESSURE	kg/cm <sup>2</sup>				37	34	22*
<b>PMG-20A With Motor</b>							
DISCHARGE	litre/min				210	230	300*
PRESSURE	kg/cm <sup>2</sup>				37	34	22*

\* Pump will be fitted with piston size (Highlighted Value), unless upon request

## FMC Pump

**Most Popular Model Sold In Singapore For Soil Investigation & Geotechnical Industries**



Bare Pump

Model	L0918B		*W1122B	
No. of cylinders	3 (piston)		3 (piston)	
Bore cylinder	57 mm		69.9 mm	
Stroke	57 mm		69.9 mm	
Capacity	Min.	Max	Min	Max.
	41.6 litre/min	76 litre/min	76 litre/min	140 litre/min
Discharge Pressure	700 psi (48 kg/cm <sup>2</sup> )		1000 psi (70 kg/cm <sup>2</sup> )	
Input Shaft	Min.	Max	Min	Max.
	360 rpm	625 rpm	350 rpm	630 rpm
Shaft diam.	38 mm		38 mm	
Crankcase Cap	2 litre		3.7 litre	
Lubrication Oil	S.A.E. 30		S.A.E. 30	
Inlet Opening diam.	1 1/2" NPT		2" NPT	
Outlet Opening diam.	1" NPT		1 1/4" NPT	
Max. Fluid Temperature	71°C		71°C	
Dimensions (L x W x H)	590mm x 318mm x 290mm		730 mm x 514mm x 360mm	
Weight	108.9 kg		193 kg	

*\* Best selling model in mining and exploration site*



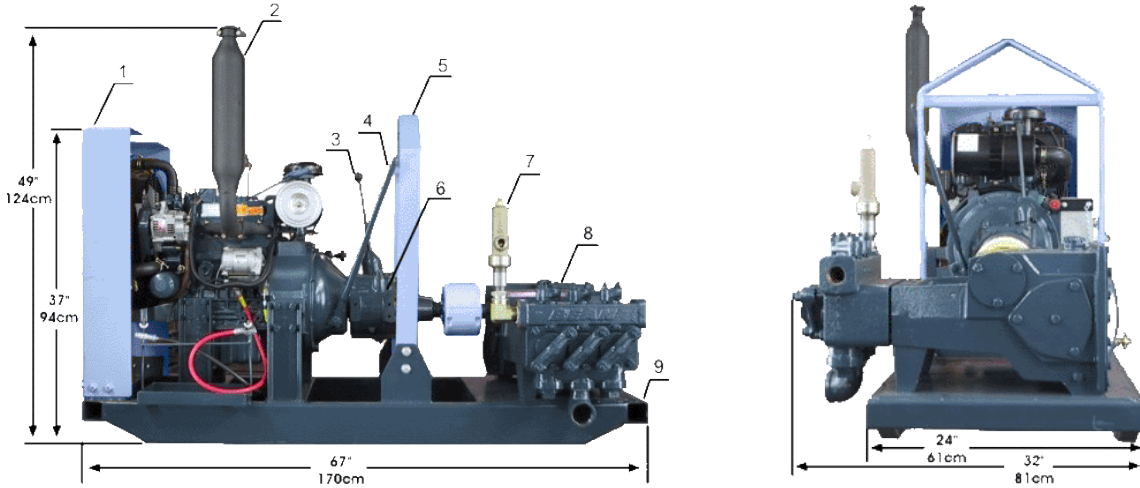
L0918BCD  
 Installed with clutch system & Diesel Engine



W1122BCD  
 Installed with clutch system, Overflow & Hopper System and Electrical start Engine

## FMC W1122BCD PUMP (WITH FOUR FORWARD SPEED GEAR & DIESEL ENGINE)

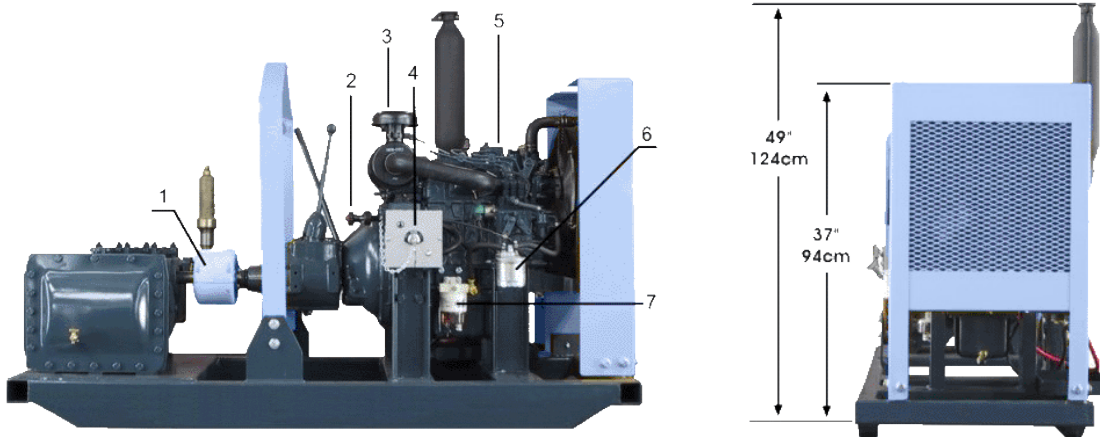
**Left Hand Side (Viewed from pump end)**



Dimensions are approximate

1. Heavy gauge removable radiator guard
2. Exhaust silencer shown in vertical position
3. Gear selector
4. Clutch actuator
5. Bolt-on-single point lifting bail
6. Transmission assembly, four speeds, with integral reduction gear
7. Adjustable pressure relief valve
8. FMC W1122BCD pump assembly
9. Welded structural tube skid base

**Right Hand Side (Viewed from pump end)**



1. Coupling with guard
2. Throttle control
3. Dry type air cleaner with replaceable element
4. Start/Stop water resistant panel
5. Kubota 3 cylinder diesel engine
6. Spin-on replaceable fuel filter
7. Primary fuel filter/water separator



**BATCHING PLANT, MIXER & AGITATOR**

MODEL	BAM500-500	
Dimension	2120mm (L) X 1400mm (W) X 2140mm (H)	
Weight	Approx. 760 kgs (Include Engine)	
Capacity	Drum Capacity	Working Capacity
Upper Capacity	750 litres	500 litres
Lower Capacity	600 litres	500 litres
Engine Power	10~12hp	
Mixing Speed	165 rpm	
Optional Items	Water Measuring Tank Cement Bag Cutter	



MODEL	2-Stage Grout Mixer LAM-250	
Dimension	1310 (L) x 640 (W) x 1510 (H) mm	
Weight	220 kg exclude Prime Mover	
Capacity	Drum Capacity	Working Capacity
Mixer	250 litre	200 litre
Agitator	250 litre	200 litre
Prime Mover	Motor 2.2 kW-4P 3~4HP Diesel Engine	



MODEL	BPAM600-200	
Dimension	1870 (L) x 1200 (W) x 1700 (H) mm	
Weight	460 kg c/w Prime Mover	
Capacity	Drum Capacity	Working Capacity
Mixer	250 litres	200 litres
Agitator	650 litres	600 litres
Prime Mover	10 HP Diesel Engine / 105 kg Motor 7.5 kW / 1450 rpm Electric Motor	
Add-ons	Cement Bag Cutter & Operator Platform Provided	
Optional	Plastic Water Tank 2-sizes of Agitator to consider	



**BATCHING PLANT, MIXER & AGITATOR**

MODEL	BATCHING PLANT BPAMP-300	
Dimension	2060 (L) x 1400 (W) x 1400 (H) mm	
Weight	523 kg	
Capacity	Drum Capacity	Working Capacity
Mixer	350 litre	300 litre
Agitator	550 litre	500 litre
Power Unit	Mixer 7.5 kW	Agitator 2.2 kW
<b>Optional</b>		
PUMP MODEL	MG-10 Grout Pump	
Pump Specs	1690 (L) x 580 (W) x 980 (H) mm	
Weight	280 kg without power unit	
Capacity	68 mm Piston	45 mm Piston
Discharge	120 l/min	50 l/min
Pressure	30 kg/cm <sup>2</sup>	70 kg/cm <sup>2</sup>
Prime Mover	7.5 kW or 10 HP Diesel Engine	

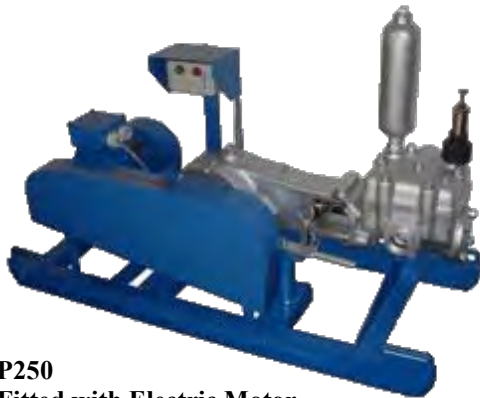


**BATCHING PLANT BPAMP-300 fitted with MG-10**



MODEL	BPAM5-10	
Dimension	2950 (L) x 1900 (W) x 2150 (H) mm	
Weight	1520 kg	
Name	Model	Mixing Capacity
Mixer	MV-500	500 litre
Agitator	AG-1000	1000 litre
<b>Mixer Motor</b> Alliance Motor c/w STM Italy Worm Gear Box Model: RMI130, 7.5kW		
<b>Agitator Motor</b> Alliance Motor c/w STM Italy Gear Box Model: CRMI 63/130, 1.5kW		
<b>Water Pump</b> Pentax Water Pump (Taiwan) 0.8 kW		





**P250**  
Fitted with Electric Motor

Model	P250
Type	Single piston double acting with clutch and ball valve
Discharge Pressure	20 kg/cm <sup>2</sup> (Max. continuous)
Displacement	85 l/m (18.5 gals/min)
Stroke	70 mm
Speed	200 rpm
Power	7HP diesel engine
Liner Bore Diameter	63.5 mm
Suction Port	51 mm (2" BSP)
Delivery Port	38 mm (1 1/2" BSP)
Transmission	Pulley and vee belt
Mounting	Skid mounted
Weight	60 kg (bare pump) 117 kg (with skid and belt cover) 198 kg (complete assembly with Yanmar TF70 engine)
Dimensions (with skid)	1500 mm (L) x 510 mm (W) x 800 mm (H)



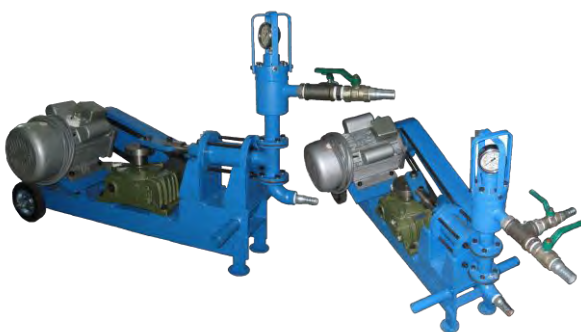
**PMG - 5A**  
Fitted with Diesel Engine

Model	PMG-5A		
Type	Single piston double acting		
Piston Diameter	45 mm	52 mm	68 mm
Discharge Capacity	28 l/min	40 l/min	70 l/min
Working pressure	60 kg/cm <sup>2</sup>	40 kg/cm <sup>2</sup>	20 kg/cm <sup>2</sup>
Stroke Length	60 mm		
Number of stroke	165 rpm		
Inlet Diameter	38 mm (1 1/2")		
Outlet Diameter	32 mm (1 1/4")		
Dimensions	2040 mm (L) x 650 mm (W) x 710 mm (H)		
Weight(excluding power unit)	280 kg		
Power unit	3.7 – 4 kW-P 5-7 PS		



**Model HP – 8 Hand Pump – Single Cylinder**

Model	HP-8 Hand Pump – Single Cylinder
Piston Stroke	35 mm
Cylinder Diameter	120 mm
Discharge Capacity	8 l/min
Discharge Pressure	1 kg/cm <sup>2</sup>
Discharge Bore	19 mm
Suction Bore	25 mm
Power System	Hand Feed
Weight	28 kg



**HPM – 8 Motorized Single Acting Piston Pump**

Model	HPM – 8 Motorized Single Acting Piston Pump
Piston Diameter	50 mm
Stroke Length	70 mm
No. of Strokes	108 rpm
Discharge Capacity	14 l/min
Working Pressure	15 kg/cm <sup>2</sup>
Inlet Diameter	25 mm (1" BSP)
Outlet Diameter	25 mm (1" BSP)/ 20 mm (3/4" BSP)
Power Unit	0.75 kW 230V Single Phase Motor
Weight	Approx. 110kg
Dimensions	1250 mm (L) x 380 mm (W) x 780 mm (H)