



# 优钻地质材料供应有限公司 PRE-MAT DRILLING SUPPLIES PTE LTD

Co Reg. No. 199900213-K GST Reg. No. 19-9900213-K  
No. 48 Toh Guan Road East #06-107 Enterprise Hub, Singapore 608586  
Tel: (65) 6861 5323 Fax: (65) 6861 0882 Mobile: (65) 9633 1617 / (65) 9665 2712  
Email: enquiry@premat.com.sg Website: http://www.premat.com.sg

## DRILLING SERIES

Drilling machine for geological survey, dam grouting, water well, water drainage

### DM-03 (RO)(LO)

\* RO : Right Operation; LO: Left Operation

Model		Wire Drum Hoist	Cathead Hoist
I. D. of Spindle	mm	47	
Spindle Speeds	rpm	65 : 125: 370	
Torque (Max)	kN m	0.54 {55 kgf·m}	
Stroke of Spindle	mm	300	
Thrust Force	kN	8.2 {840 kgf}	
Balance Force	kN	13.5 {380 kgf}	
Power		3.7 kW / 4P or 5PS	
Dimensions (LxWxH)	mm	1130 x 500 x 960	1115 x 500 x 960
Mass	kg	200	180

Oil-hydraulic slide base or Oil hydraulic chuck is option equipment.

### DM-03 (LO)400ST Mounted BG-2 and CATHEAD HOIST

Model		Cathead Hoist
I. D. of Spindle	mm	47
Spindle Speeds	rpm	65 : 125 : 370
Torque (Max)	kN m	0.54 {55 kgf·m}
Stroke of Spindle	mm	400
Thrust Force	kN	8.2 {840kgf}
Balance Force	kN	13.5 {1380kgf}
Power		3.7kW /4P or 5PS
Dimensions (LxWxH)	mm	1505 x 800 x 1075
Mass	kg	340

Oil-hydraulic slide base or Oil hydraulic chuck is option equipment.

### DO-D(RO)(LO)

\* RO : Right Operation; LO: Left Operation

I. D. of Spindle	mm	43	
Spindle Speeds	rpm	(A) 60 : 170 : 330	(B) 110 : 320 : 625
Torque (Max)	kN m	(A) 0.59 {60 kgf·m}	(B) 0.32 {33 kgf·m}
Stroke of Spindle	mm	400	
Thrust Force	kN	15.9 {1620kgf}	
Balance Force	kN	21.2 {2160kgf}	
Power		3.7kW /4P or 5PS /1800 rpm	
Dimensions (LxWxH)	mm	1200 x 660 x 1090	
Mass	kg	290	

Spindle speed (A) is standard. Oil-hydraulic chuck is standard equipment.  
Manual chuck is option equipment. Drilling pump can build in this machine.

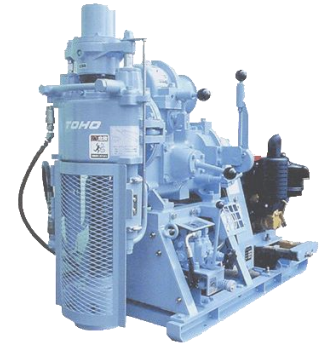
### D1-C-S1 (RO)(LO)

\* RO : Right Operation; LO: Left Operation

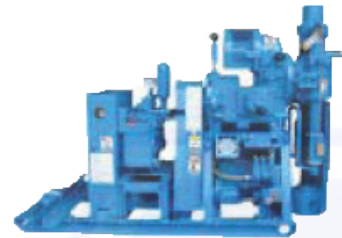
I. D. of Spindle	mm	48	58
Spindle Speeds	rpm	(A) 65 : 130 : 240 : 370 (A) 85 : 170 : 320 : 500 (A) 160: 310 : 590 : 900	(B) 50 : 100: 85 : 285 (B) 65 : 130:245: 380
Torque (Max)	kN m	(A) 0.81 {83 kgf·m } (A) 0.62 {63 kgf·m } (A) 0.33 {34 kgf·m }	(B) 1.05{107 kgf·m } (B) 0.81 {83 kgf·m }
Stroke of Spindle	mm	500	
Thrust Force	kN	21.6 {2200kgf}	
Balance Force	kN	28.9 {2950kgf}	
Slide System	mm	Oil hydraulic : Stroke 300	
Power		5.5kW /4P or 8PS /1800 rpm	
Dimensions (LxWxH)	mm	1580 x 735 x 1390	1580 x 735 x 1430
Mass	kg	550	565

Spindle speed (A) is standard.  
Oil-Hydraulic slide base. Oil-Hydraulic chuck is standard equipment.

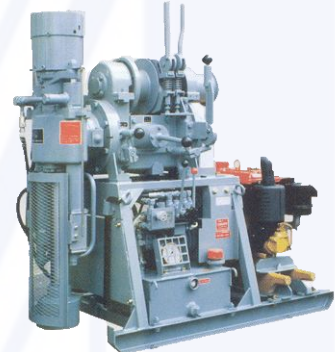
❖ **NOTES: Specifications are subject to change without prior notice.**



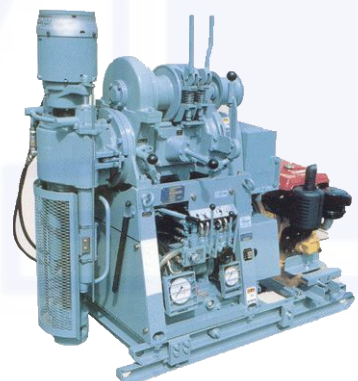
DM-03 (RO)(LO)



DM-03



DO-D (RO)(LO)



D1-C-S1 (RO)(LO)

### D2-JS(III)

I. D. of Spindle	mm	48
Spindle Speeds	rpm	55 : 155 : 310
Torque (Max)	kN m	0.95 {97 kgf·m}
Stroke of Spindle	mm	500
Thrust Force	kN	21.6 {2200 kgf}
Balance Force	kN	28.9 {2950 kgf}
Power		5.5 kW / 4P or 7.5PS/1800 rpm
Dimensions (LxWxH)	mm	1430 x 800 x 1390
Mass	kg	470

Oil-hydraulic chuck is standard equipment. Manual chuck is option equipment.

### D2-KS58 (RO)(LO)

\* RO : Right Operation; LO: Left Operation

I. D. of Spindle	mm	58
Spindle Speeds	rpm	(A) 60 : 120 : 230 : 360 (B) 100 : 190 : 360 : 560 (C) 130 : 260 : 500 : 770
Torque (Max)	kN m	(A) 0.88 {90 kgf·m} (B) 0.53 {54 kgf·m} (C) 0.40 {41 kgf·m}
Stroke of Spindle	mm	500
Thrust Force	kN	21.6 {2200 kgf}
Balance Force	kN	28.9 {2950 kgf}
Slide System	mm	Oil hydraulic : Stroke 400
Power		5.5 kW /4P or 7.5 PS /1800 rpm
Dimensions (LxWxH)	mm	1780 x 870 x 1620
Mass	kg	680

Spindle speed (A) is standard. Oil-hydraulic chuck is standard equipment. Manual chuck is option equipment. Drilling pump can build in this machine.

### D2-K (II), (III)92(RO)(LO)

\* RO : Right Operation; LO: Left Operation

Model		D2-K (II) 92	D2-K (III) 92
I. D. of Spindle	mm	92	
Spindle Speeds	rpm	(A) 60 : 180 : 355 : 65 (R) (B) 30 : 90 : 170 : 35 (R)	17: 50 : 95 : 18 (L)
Torque (Max)	kN·m	(A) 1.18 {120 kgf·m} (B) 2.35 {240 kgf·m}	3.09 {315 kgf·m}
Stroke of Spindle	mm	400	
Thrust Force	kN	21.6 {2200 kgf}	
Balance Force	kN	28.9 {2950 kgf}	
Slide System	mm	Oil hydraulic : Stroke 400	
Power		7.5 kW /4 P or 10 PS /1800 rpm	5.5 kW /4 P or 7.5PS /1800 rpm
Dimensions (LxWxH)	mm	1800 x 870 x 1570	1835 x 870 x 1620
Mass	kg	700	820

Spindle speed (A) is standard. Oil hydraulic slide base. Oil-hydraulic chuck is standard equipment.

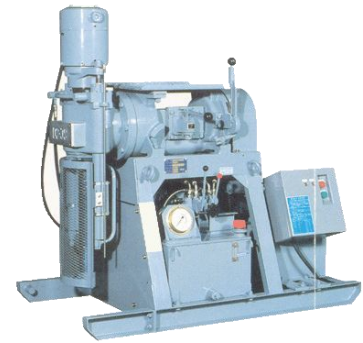
### D3-92

\* RO : Right Operation; LO: Left Operation

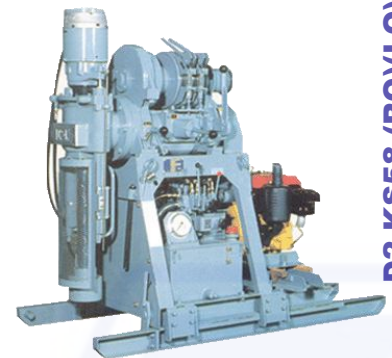
I. D. of Spindle	mm	92
Spindle Speeds	rpm	30 : 63 : 121 : 24 (R)
Torque (Max)	kN·m	3.49 {356 kgf·m}
Stroke of Spindle	mm	500
Thrust Force	kN	41.6 {4240 kgf}
Balance Force	kN	55.5 {5660 kgf}
Slide System	mm	Oil hydraulic : Stroke 400
Power		11 kW /4 P or 15 PS /1800 rpm
Dimensions (LxWxH)	mm	1843 x 873 x 1706
Mass	kg	935

Oil-Hydraulic slide base. Oil-Hydraulic chuck is standard equipment.

❖ **NOTES: Specifications are subject to change without prior notice.**



D2-JS(III)



D2-KS58 (RO)(LO)



D2-K(II)92(RO)(LO)



D3-92(RO)(LO)